

POLYWOOD®



POLYWOOD's Spring
2026 Guide to Creating
Your Dream Outdoor Space

Table of Contents

Meet POLYWOOD	3
Define Your Space's Purpose	5
Preparing Your Space	12
Your Style	16
Why POLYWOOD?	20





section one

Meet POLYWOOD

Meet POLYWOOD

DESIGNED FOR DECADES—NOT SEASONS

Meet the original all-weather furniture: proudly made in the USA, backed by tried-and-true durability and a 20-year lumber warranty.

For over 35 years, we've refined outdoor living by balancing all-weather innovation with elevated furniture design.

Shop all collections with free shipping at polywood.com



“I was always looking for good outdoor furniture. I really like sturdiness. I like beauty. I like good color. And POLYWOOD affords us just all of those things.”

MARTHA STEWART



FEATURED: PW DESIGNER SERIES ELEVATE COLLECTION

section two

Define Your Space's Purpose

Define Your Space's Purpose

Outdoor space design is often approached backward. Whether you're starting with a blank canvas or are trying to realize its full potential, ask yourself: What do you want to happen out there? Morning meditation? Extended family potlucks? Playzone by day, grown-up gatherings at night? All of the above? To avoid designing a stunning space that no one uses, think function first and furniture second.



FEATURED: CHINOISERIE 4-PIECE DEEP SEATING SET

“It looks like you’ve taken the indoors and brought it outdoors. And yet it really is outdoors.”

MARTHA STEWART

ENTERTAINING AREA

A place to entertain outdoors can be defined in countless ways. Think about events where you felt crowded inside or wished you could take advantage of the weather. From a coffee date with close friends to dinners and nightcaps that extend well past sunset, this area should flex to fit the occasion. Here are our top furniture recommendations for an outdoor entertaining area:

- 1 |** Deep seating with quick-drying, weather-resistant cushions invites people to settle in.
- 2 |** Modular pieces let you reconfigure for different group sizes—push sections together for movie night, separate them for cocktail-style mingling.

3 | Coffee and accent tables for setting down drinks, serving appetizers, and gathering 'round.

4 | Folding chairs provide backup seating without taking up too much floor space.

5 | Storage tables and benches keep cushions, throws, and outdoor games accessible but out of sight.

The best furniture will strike a balance between indoor comfort and outdoor durability. Choose materials that can handle weather and neglect without worry of cracking, splitting, or deteriorating. Because this space is designed for entertaining—not maintaining.

FRONT PORCH RETREAT

The front porch is likely your most seen outdoor space—and possibly your most underused. Designed right, it becomes the neighborhood’s most envied spot: somewhere you want to spend time, not just pass on your way inside.

Your porch’s orientation may determine when and how you use it. South- and west-facing porches benefit from shade solutions—whether that’s strategic furniture placement, tall potted plants, or privacy screens. North- and east-facing porches often receive morning sun and stay cooler throughout the day.

Either way, seating here should be comfortable—even if you don’t have the square footage or desire to commit to a full living room setup. Rocking chairs and gliders offer gentle motion, while a bench can serve as a handy spot to gather your belongings or change shoes. A side table can easily hold a mug or a book. If space allows, a loveseat or porch swing creates a proper destination, not just a place to pause.

[Shop Front Porch Favorites >](#)

FEATURED: [VINEYARD 3-PIECE ADIRONDACK SET](#) IN NEW POLYWOOD SELECT™ LUMBER IN NATURAL



“We recently updated our porch furniture with beautiful all-weather pieces from POLYWOOD. We’re so happy with the quality! Not only are they stylish and comfortable, but they’re also incredibly durable and can withstand anything Mother Nature throws their way.”

MAGGIE YORK
@MARGARETOFYORK

ALFRESCO DINING AREA

Outdoor dining transforms ordinary meals into occasions. There's something about eating outside—the fresh air, the light—that makes even takeout feel special. Whether it's a birthday barbecue or a quiet weeknight dinner, a dedicated dining area elevates every experience. But for families who want to get the most out of this space, their outdoor dining furniture needs to work hard.

[Shop Traci's Picks >](#)

“Our goal was to outfit our home with furniture that can easily be cleaned and can withstand the Texas heat and gusty winds. Enter POLYWOOD, heavy enough to stay put while meeting our family's needs as we create memories together.”

TRACI CONNELL
INTERIOR DESIGNER



FEATURED: [EDGE 7-PIECE DINING SET](#)

Before making any big design decisions, ask yourself these essential questions:

How often will you actually eat out here?

If it's a once-a-summer thing, your needs differ from someone planning nightly dinners alfresco.

What's your typical headcount?

Consider your regular dinner crew, plus the occasional larger gathering. Extra seating is always a good idea to have on hand.

What's your space reality?

Measure generously—not just for the table itself, but for the room needed to pull out chairs, walk around, and move comfortably. A beautiful dining set crammed into a too-small space defeats the purpose.

Map out usable dining and serving space, consider traffic flow, then have fun finding the perfect set and accessories you'll love for decades to come.



FEATURED: [ACADIA DEEP SEATING CHAIRS](#) AND [22" SQUARE END TABLE](#)

RELAXING NOOK

Not every outdoor space needs to be fit for a crowd. Carving out a corner that's unapologetically meant for one—or two—may be the best way to maximize your time outside, especially if you want somewhere to prioritize peace over productivity.

Location matters here more than in multiuse spaces: somewhere with the best view, or where the light hits just right at your preferred times of day. A single deep seating chair or a small loveseat, plus a side table for your drink, creates a cozy nook. Perhaps an ottoman if you're the feet-up type. Consider privacy, too

—not necessarily walls or fences, but natural screening with plants, strategic angles, or just distance from the home's main activity zones.

This is your morning mindfulness spot. Your reading corner. Where you decompress after work, surrounded by nature as your soundtrack. When you have a spot that's truly restorative, you'll find yourself using it without needing a reason. And since this is your space, let your unique personality and style shine through.

[Shop the Acadia Collection >](#)

“Here is the Mission-style that I have down at the Maple Avenue house. Look how pretty that looks ... It is a very nice and unusual setting for outdoors.”

MARTHA STEWART

CONVERSATION AREA

Outdoor spaces naturally encourage more time together and less screen time—design with that in mind. A fire pit table is ideal—it provides warmth, natural ambiance, and something to gaze at. If fire isn't an option, a substantial coffee table works just as well for anchoring the space and providing guests with a place to set their drinks during conversation.

You'll want tables and seating where people can see each other without craning their

necks or repositioning chairs mid-sentence. Arrange seating in a circle, but keep some pieces movable. A few folding chairs or ottomans let you adapt as the evening evolves or the group expands. The goal is a space that accommodates intimate conversations and impromptu drop-bys without requiring a complete rearrangement.

[Shop Meg's Picks >](#)



“My Aunt Liz’s dock is where we end up for almost every happy hour. I brought in the South Beach Casual Chairs, and we also selected a low cocktail table that we put all our appetizers on, and it’s easy to set drinks down along with some side tables for extra surface space.”

MEG CASWELL
INTERIOR DESIGNER, TV PERSONALITY, AND HGTV HOST



FEATURED: SOUTH BEACH CASUAL CHAIRS,
ROUND 37" CONVERSATION TABLE,
AND SEASHELL 18" SIDE TABLES



FEATURED: NAUTICAL CHAISE WITH ARMS & WHEELS (LEFT), CHIPPENDALE BAR CART (MIDDLE), LAGUNA 3-PIECE IN-POOL CHAIR LOUNGE SET (RIGHT)

POOLSIDE AREA

Poolside spaces should be well-suited to both active pool time and daily downtime. The most successful pool areas create distinct zones that work in cohesion. The furniture you choose should be able to handle splashes, drippy treats, and lounging on days when no one's swimming.

Start with the essentials: chaise lounges with weather-resistant materials that dry quickly and won't fade under constant UV exposure. Angle some for maximum sun, others near shade (or make life easy with wheeled seating). Side tables between chaises keep drinks, sunscreen, and favorite magazines within easy reach. Strategically position a console table or bar cart filled with towels for folks to dry off on the way inside.

In-pool furniture takes the lounge potential even further—right onto your pool's sun shelf. Look for chairs and tables that fill with water to prevent floating, are designed without seams or potential stress points, and can be safely used on all pool surfaces.

If you have additional room, a dining set or seating area away from the water's edge maximizes the space's usefulness. This is the place to serve snacks outside of the splash zone and where evening gatherings continue after swimming hours end. Arrange furniture to create clear pathways that don't require navigating around obstacles or crossing directly through conversation areas—and don't forget an umbrella for much-needed shade.

[Shop Eva's Picks >](#)



"I'm a BIG fan of furniture that withstands the elements, is low maintenance, and comfortable. In the summer—honestly, any time of year here in North Carolina—you can usually find me on these chaises."

EVA SHOCKEY
TV PERSONALITY



FEATURED: 48" VINEYARD STRAIGHT PLANTER BENCH SET



FEATURED: WOVENDALE ROCKING CHAIR AND COUNTRY LIVING PLANTERS

GARDENING + ORGANIZING SPACE

Whether it's a portion of your patio or a small area off to the side, a dedicated gardening and organizing space brings ease and order to outdoor living. Start with structure. A console table makes a perfect potting bench, keeping seeds, soil, and snips on hand. Benches with interior storage protect gear and corral clutter, from garden gloves and hedge shears to pool toys and lawn games. Plus, they make a cozy spot to stop with coffee and smell the roses. Coordinating planters put your kitchen herbs or layered seasonal displays front and center.

This space gets dirty by design, so you'll want furniture and accessories that clean up quickly and look great without the weekend chore list. The goal is simple: a workspace that keeps chaos contained and beauty visible. Functional and considered. Hardworking and good-looking. Just like the rest of your great outdoors.

"I've been on the hunt for beautiful, clean-lined, all-weather planters like these for a good while now, which is why I can't wait to put these to work on my own front porch."

RACHEL HARDAGE BARRETT
COUNTRY LIVING EDITOR-IN-CHIEF

KID'S CORNER

Give little ones freedom to snack, craft, and play to their hearts' content with an outdoor space that's all theirs. They don't need much to make it their own—just some fun-sized furniture that sets the scene for wherever their imaginations go.

Start with seating scaled to their size. The kids' table is always the most fun, a place for tea parties, fingerpaints, and birthday cake. Adirondack chairs let them kick back after a long day's play. Storage furniture reports for clean-up duty, keeping sports equipment, sidewalk chalk, and sand toys out of sight when not in use.

When planning their corner, look for sturdy, unfussy furniture that won't splinter or need to be replaced next year. Prioritize pieces that withstand the elements and clean up in minutes. The best kids' furniture grows with them and lasts as long as the memories they make.



FEATURED: KIDS MODERN ADIRONDACK CHAIR (TOP),
VINEYARD 9-PIECE FARMHOUSE DINING SET AND LAKESIDE TODDLER 5-PIECE DINING SET (BOTTOM)



FEATURED: MODERN ADIRONDACK CHAIRS

section three

Preparing Your Space

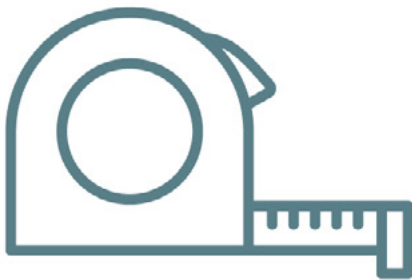
Preparing Your Space

THE TOOLS YOU NEED

Accounting for space is the most important step in planning your outdoor areas. You need to strike the perfect balance between cluttered and cavernous to allow maximum utility and comfort without overwhelming your outdoor areas. Luckily, there's an easy way to gain the upper hand when planning your outdoor living spaces—measure them!

TOOLS

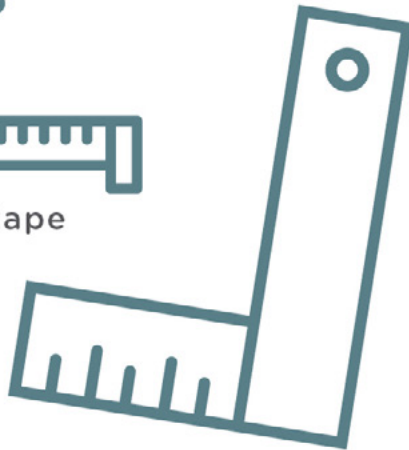
- Pencil
- Plain paper
- Graph paper
- Ruler
- Carpenter's square
- Compass
- Measuring tape



measuring tape



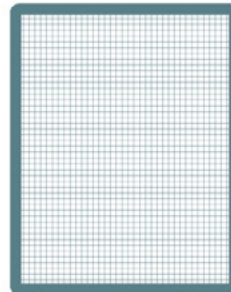
compass



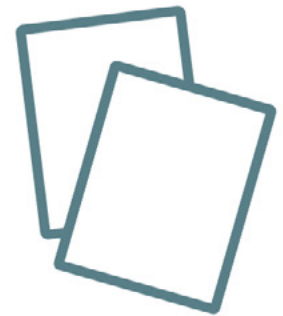
carpenter's square



pencil



graph paper



paper



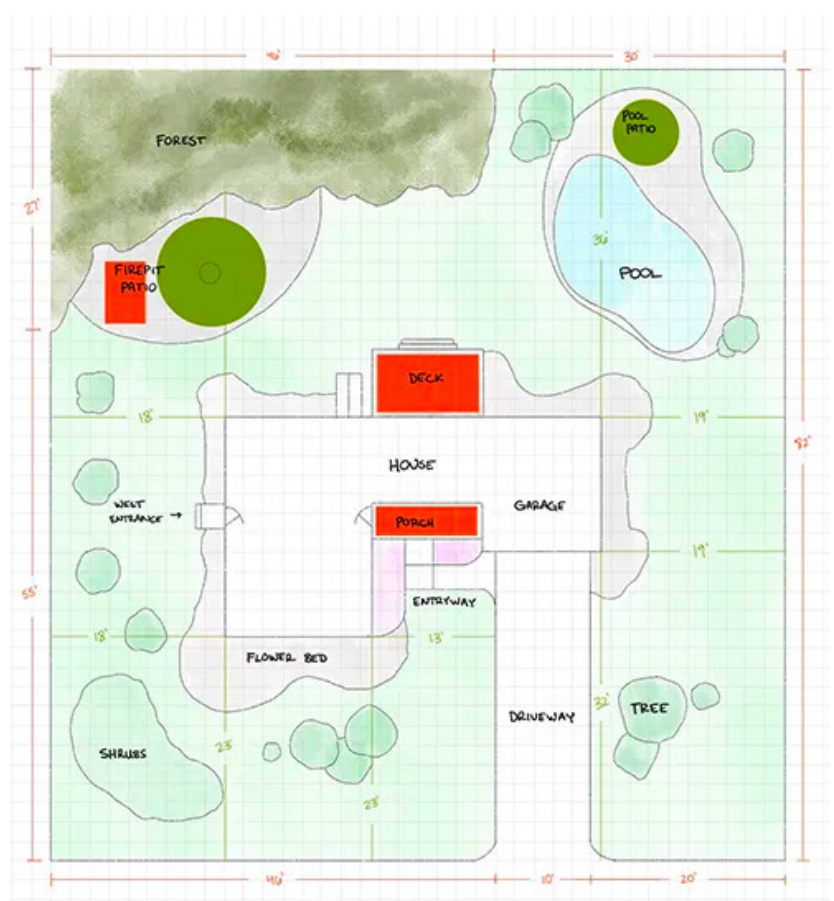
a friend



ruler

How to Measure Your Outdoor Space

1. Use plain paper and a pencil to make an initial sketch of your entire property, leaving enough space between elements to record your measurements. Walk around your property to make your sketch as accurate as possible. Include:
 - Your house's location
 - All fences or borders of your property, like sidewalks
 - Existing and planned walking paths, driveways, and on-property sidewalks
 - Constructed spaces like patios, porches, and decks
 - Pools
 - Trees and bushes
 - Utility poles
 - Permanent structures like sheds, pergolas, or canopies
2. Measure the property's boundaries, including fences, walls, or natural barriers. Measure the length and width of all property elements larger than a tree—driveways, permanent structures, etc.
3. Next, measure all sides of your home. Record measurements.
4. If your home is parallel to the property's boundaries, measure the distance from each corner of the house to the nearest boundary. If your home is not parallel to the boundaries and sits at an angle, measure the distance from the center of each side of the house to the nearest boundary.
5. Measure the distance from each property element to the nearest boundary in two directions, making the two measurements at a 90-degree angle. For example, for a tree in the northeast corner, measure the distance to the north boundary and east boundary so you can correctly place it on your final landscape plan.



How to Measure Your Outdoor Space

6. Using a compass, determine which direction is north. Mark this on your sketch.
7. Orient your graph paper so north is pointed up. Before transferring your sketch, decide on an appropriate scale. Your entire property should comfortably fit on the paper. Use the measurements of your property boundaries to determine an appropriate scale.
8. Using your sketch as a reference, draw the property boundaries on your graph paper, keeping the measurements to scale. Place all yard elements onto your graph paper using the two measurements from each element's property boundaries. Once you have a corner use the width and length measurements to draw them to scale. Use a carpenter's square to make 90-degree angles on your landscape plan.
9. Double-check measurements and compare your landscape plan to your yard. Make any corrections.
10. If you have an upstairs balcony or deck that overlaps a first-level outdoor space, draw two separate landscape plans to create clear views of all your outdoor areas.
11. Circle the distinct areas formed around your property. Filling every single space is not necessary. However, you'll see there are many possibilities to add different functional zones around your home.

Design with Confidence

Order POLYWOOD material samples to experience our quality and color options before purchasing your new all-weather outdoor furniture.

[ORDER SAMPLES](#)



FEATURED: CHINOISERIE 9-PIECE
DINING SET WITH TRESTLE LEGS

section four

Your Style

Classic Style

Classic style cannot be touched by time. Furniture with a classic look exudes a quiet elegance, featuring gentle curves and subtle details that still catch the eye. Classicism originated in Europe around the 17th century with its inspiration lying in ancient Greek and Roman art and architecture and still remains a dominant style to this day—a fashion that never fades.

KEY FEATURES

- Rich earth tones
- Subtle yet distinct design elements
- Balanced contours

WHAT DOES CLASSIC FURNITURE GO WELL WITH?

- Casual, versatile spaces
- Floral arrangements
- Fabrics with understated texture or patterns
- Lush landscaping of flowering bushes and climbing English ivy
- Outdoor curtains and pendant lights

FEATURED: [CHIPPENDALE 7-PIECE FARMHOUSE DINING SET](#)



“I adore POLYWOOD’s fresh take on classic outdoor design. As a classic designer myself, I am delighted with the way the brand’s clean lines fit into my aesthetic. My clients feel comfortable purchasing POLYWOOD’s sustainable yet stunning furniture. Design trends come and go, but classic style never fades.”

SHAYLA COPAS
INTERIOR DESIGNER, OWNER, SHAYLA COPAS INTERIORS



Transitional Style

Transitional style strikes the perfect balance between classic and modern styles. This type of furniture features sophisticated yet simple designs with thoughtful combinations of clean lines and soft curves. It's a fairly new style that gained popularity in the mid-to-late 20th century, appealing to those who wanted elements from both classic and modern design to create furniture that is "just right."

KEY FEATURES

- Neutral colors such as cream, grey, and black
- Balance of straight lines and contours
- Curved backrests

WHAT DOES CLASSIC FURNITURE GO WELL WITH?

- Eclectic and cozy spaces
- Large potted plants like monstera and fiddle leaf figs
- Accent pillows with large-scale patterns
- A blend of different textures
- Decor pieces from the past and present

FEATURED: [LAKESIDE 4-PIECE DEEP SEATING SET](#)



"I approach design in my home and my clients' homes with three specific goals in mind: create transitional spaces that include clean lines, storytelling, and comfort. By utilizing transitional style, I'm able to pull form not just one style but many styles that completes a home and gives it character and charm. POLYWOOD outdoor furniture features clean lines and effortlessly chic designs and colors that can work for any space."

SARA RAAK
INTERIOR DESIGNER, OWNER, SKG DESIGNS AND STYLE



Modern Style

Modernism began in Europe at the beginning of the 20th century and impacted all forms of art and design—furniture included. Modern style furniture leans toward minimalism and striking designs, featuring clean lines and sleek silhouettes. Individuals looking for pieces that make bold statements would like modern style furniture.

KEY FEATURES

- Neutral or natural colors
- Sleek silhouettes
- Angular design elements

WHAT DOES CLASSIC FURNITURE GO WELL WITH?

- Open space with minimalist landscaping
- Boxwood hedges, ornamental grasses, and succulents
- Bold accent colors
- Concrete pathways and patios
- Mirrored, metallic, or wood accents

FEATURED: [MODERN CURVEBACK ADIRONDACK 6-PIECE FARMHOUSE DINING SET WITH TRESTLE LEGS AND BENCH](#)



“We have a mid-century modern house nestled in the woods. It’s very hard to find modern outdoor furniture that is in a reasonable price range and that doesn’t feel too metallic or plasticky. POLYWOOD had just what we wanted... the perfect blend of a classic style with a modern twist.”

JESSICA DAVIS
OWNER AND CREATIVE DIRECTOR, ATELIER DAVIS



Why POLYWOOD?



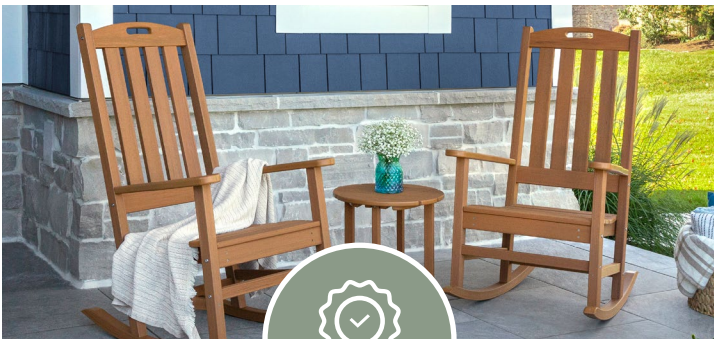
CLIMATETUFF™ MATERIALS

Our proprietary lumber and weather-defying materials are extensively tested to endure heavy rain and snow, hot sun, strong winds, and salt air.



SOLIDCORE™ DURABILITY

With unrivaled strength and endurance from the inside out, our lumber isn't prone to splinter, rot, crack, chip, or peel.



20-YEAR WARRANTY

Rest (and relax) assured: Our lumber is backed by a 20-year warranty to guarantee generations of enjoyment and endless peace of mind.



MADE IN THE USA SINCE 1990

Our collections are crafted at state-of-the-art facilities in Indiana and North Carolina.

ENJOY FREE SHIPPING AT [POLYWOOD.COM](https://www.polywood.com)

POLYWOOD[®]