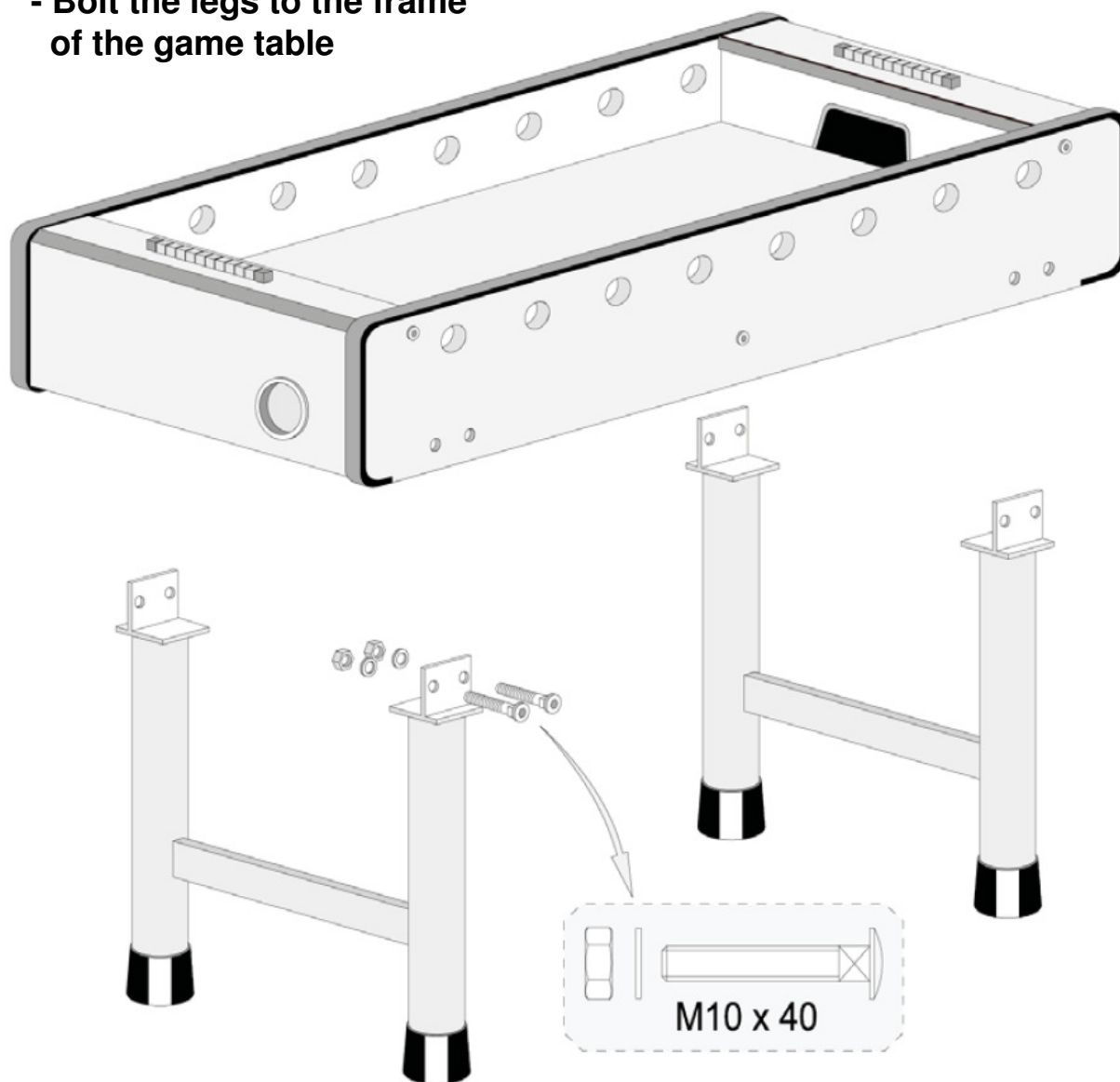


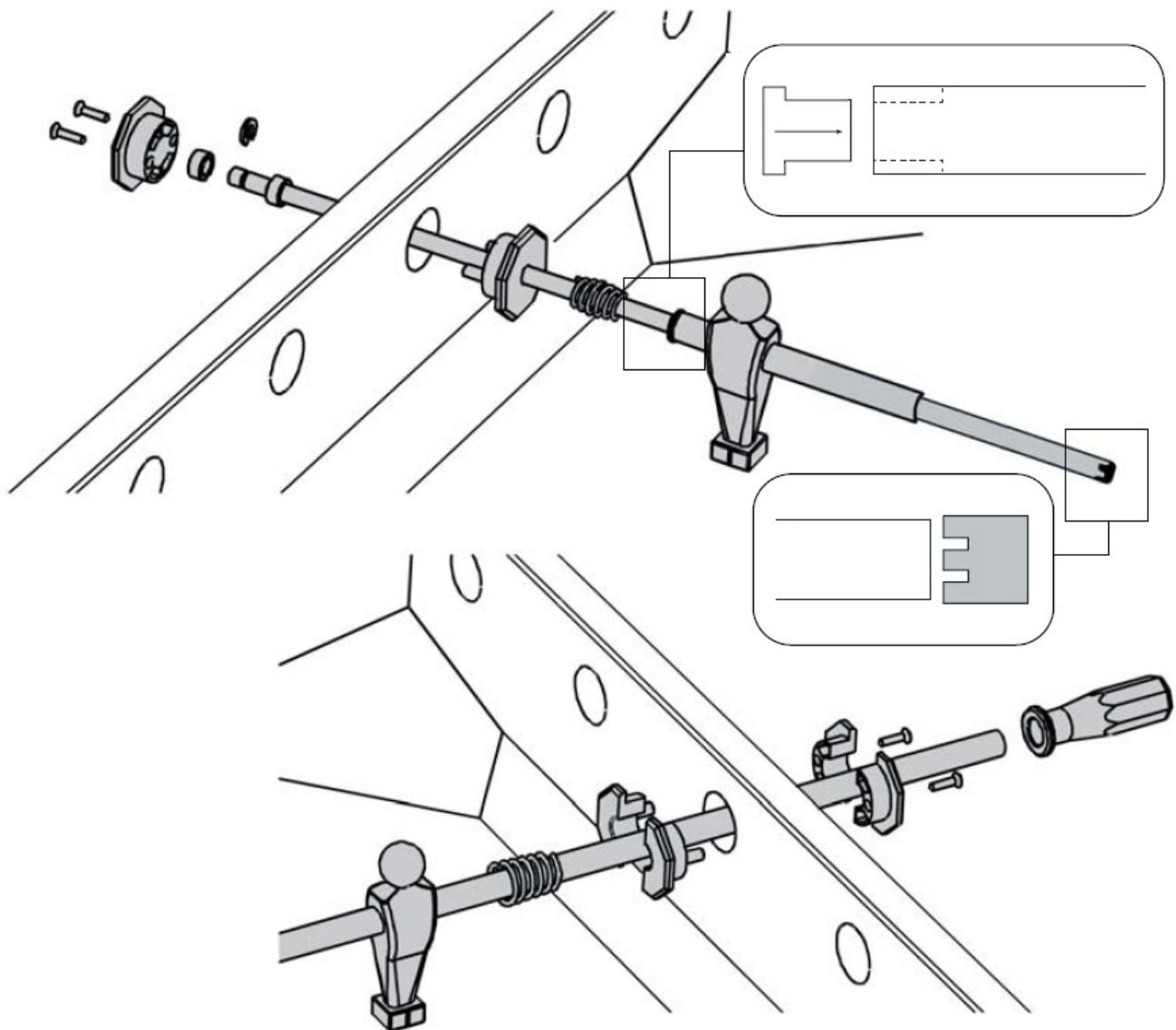
Detailed Assembly Instructions for Longoni Bomber Foosball Soccer Tables

IMPORTANT NOTE : DO NOT install the handle grips onto the player rods until the very end of the assembly, and only after the player rods are in their accurate locations and pointing directions.

- Step 1 :
 - Bolt the legs to the frame of the game table



- **Step 2 :**
 - **Assemble the player rods as per the configurations below**



Please see the following pages for more details and images.



Once completed, the player rods and score keepers should look like the ones shown above, based on the positions and proper directions they face. All red players face one way, all the blue ones face the other direction.



Insert the small black plastic caps at the tips of the large diameter rods



With a hammer or rubber mallet, tap the black caps into the opening of the large diameter rod



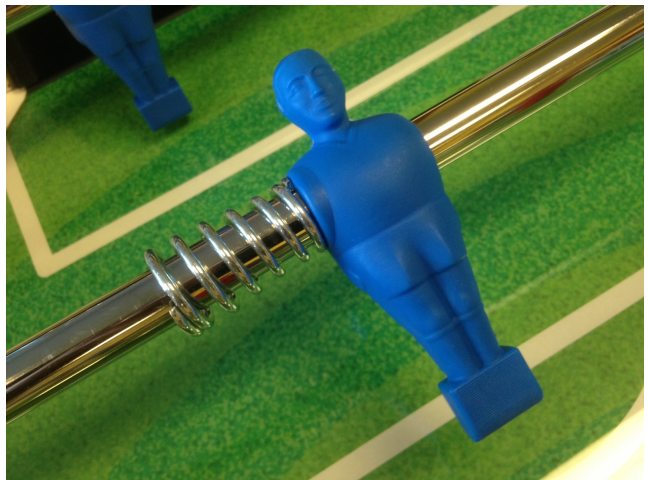
Insert a spring from its smaller end towards the player. The large side of the spring should be facing away from the player



From the other end of the same rod, now insert another spring by its smaller side also.



For this step, you will need to turn counter-clockwise and at the same time push hard on the spring to get passed the grooves in the rod tip



The small end of the spring should be resting against the player and the large part of the spring should be facing away from the player



Insert the small diameter rod into the larger diameter rod



From the playing surface side, pair two of the positive and negative part that have NO screw holes and push them against the rod and into the opening



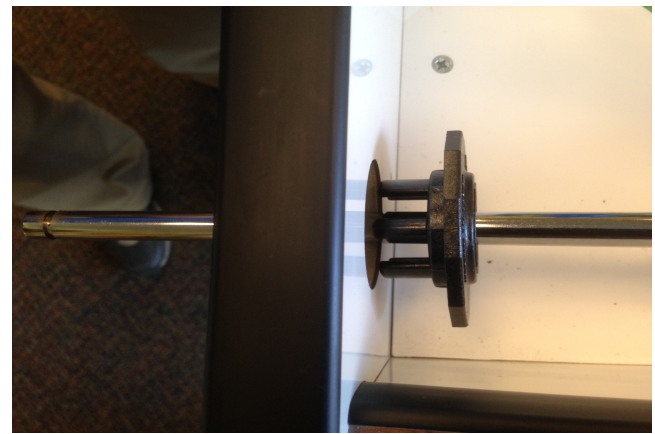
From the outer side of the game cabinet, place on each side of the rod, the positive and negative plates that DO have screw holes



Screw the outer cabinet plates to the ones on the inside of the playing surface by lining-up the screw holes and cylinders on the other plates



On the smaller rod at the other end, insert the full plate that has NO screw holes



The overhead view should look like this



Insert a spring from its smaller side, towards the inside of the game surface



Place the " U " shaped black washer onto the small rod end groove with its three little plastic dimples facing the game surface



The complete end of the small rod should now look like this one



Once you've pushed the small rod assembly in towards the cabinet, it should now look like this



From the outer side of the cabinet, place a full end-cap that DOES have screw holes in order to screw it from the outside of the game



Screw-in the end cap – Now repeat steps for other player rods. **Once ALL the rods are assembled, and inserted in their correct locations and accurate pointing directions, you may then install the handles.**